

COPPABELLA WIND FARM

Project Update for CCC Members

21 March 2024



- Community Engagement Update
- Project Update
- Planning Update
- Construction & Operations phases – asset management introduction

Community Engagement Update

The Binalong Information Centre is open

- Alison is present Mondays 12:30 – 2:30pm and Thursdays 9am - 12noon
- Stakeholder Engagement Manager was appointed last year (Paul McMahon)
- Paul and Alison attended the Harden Kite Festival and Yass Irish and Celtic Music Festival in 2023.
- Sponsorship started with the Binalong NSW Swimming Club
- Paul and Alison have met with some local site neighbours to re-establish contact and provide a project update
- Please inform your neighbours about the project and to connect with Paul or Alison. Several contact numbers in our records are no longer in service, Paul and Alison can update contact information.
- March Newsletter is being distributed shortly
- Coppabella Website is continuously updated. Project updates are provided to the community as we progress towards construction



As the project gets closer to construction, we will continue to support local communities

- Sponsorship Fund continues to operate. Contact Alison or Paul if you have any sponsorships ideas or proposals.

Community Engagement Update

Project Contact Points

General Information hotline
(free call where you leave a messages and Alison will get back to you)

1800 884 689

Email

info@coppabellawindfarm.com

Website

www.coppabellawindfarm.com

Paul's direct phone number
(Stakeholder Engagement Manager)

0400 004 293

Alison's direct phone number
(Local Community Relations Officer)

0401 472 691

Ben's direct phone number
(Development Manager)

0400 882 095



Project Update

Project Update – key elements

Progressing internal Goldwind approvals

- Firm Pricing for Construction Contracts
- Funding arrangements

Finalising Coppabella program

Planning Approvals (State, Federal, Crown):

- Satisfying pre-construction conditions and compliance planning activities
- Environment Protection Licence (for Construction Activities)
- Transgrid Addendum REF 2 for 99M Rebuild (incl. STATCOM) was approved 1 March 2024

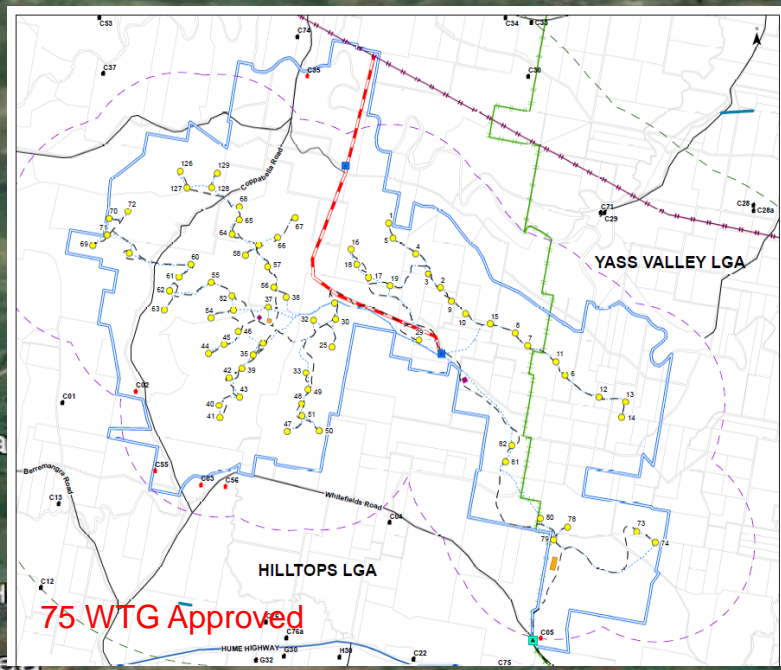
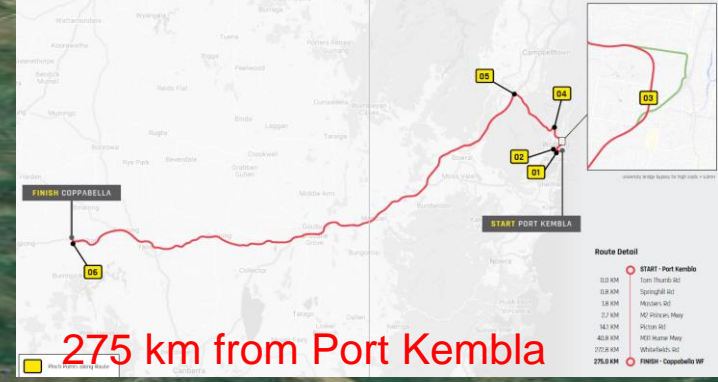
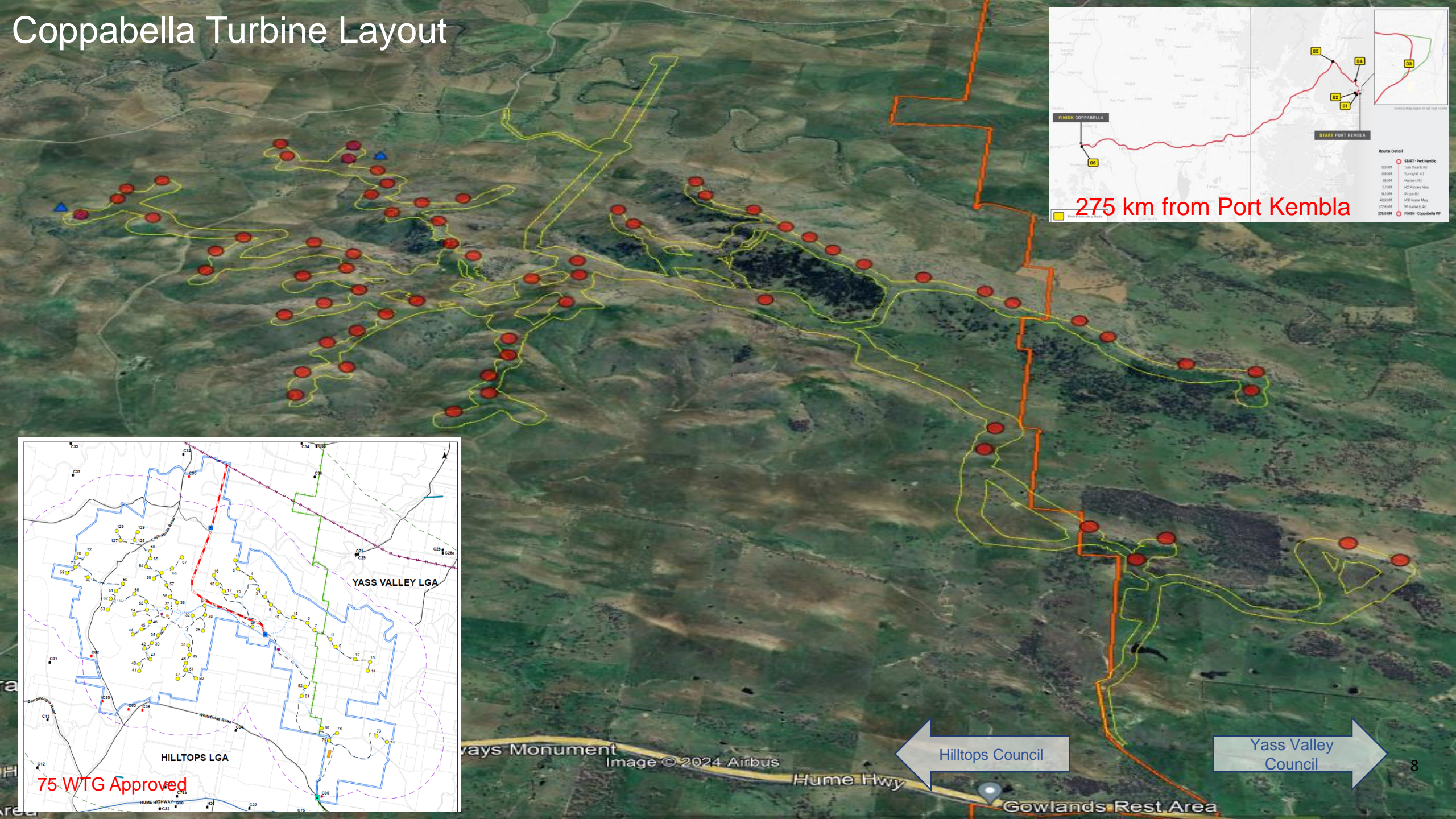
Grid Connection Agreement

- Connection Application was lodged Feb 2023
- Full Impact Assessment analysis has been successfully completed, report is pending
- Full submission package review – prep & final AEMO/TG acceptance
- Transgrid has re-tendered 9R0/99M line upgrade works with selected contractors
- Connection schedule & costings under assessment
- Offer to Connect anticipated 2Q24

Land Agreements

- Transgrid access arrangements – maintain grid connection
- Neighbour Agreements

Coppabella Turbine Layout



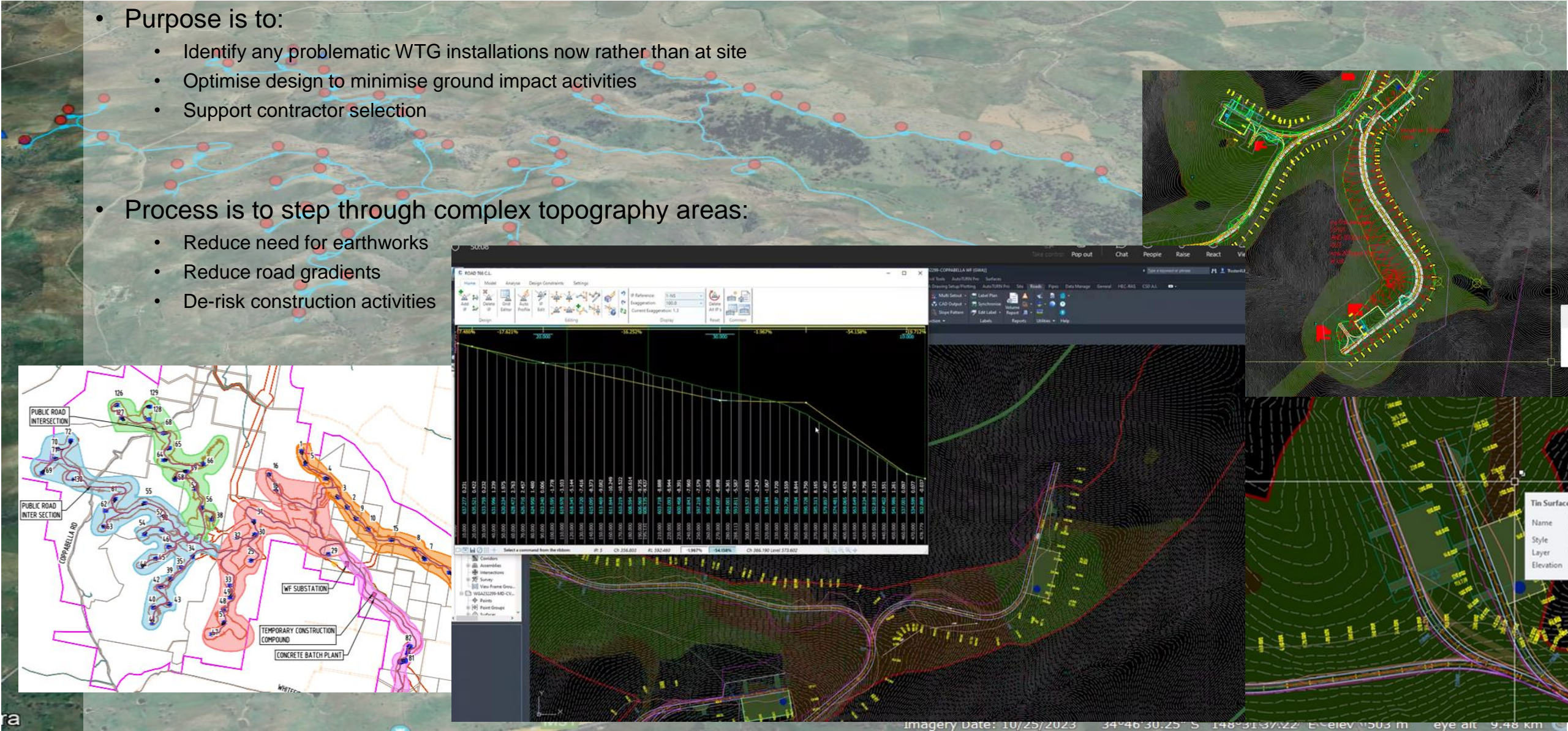
Hilltops Council

Yass Valley Council

Coppabella Civils Design –1Q24

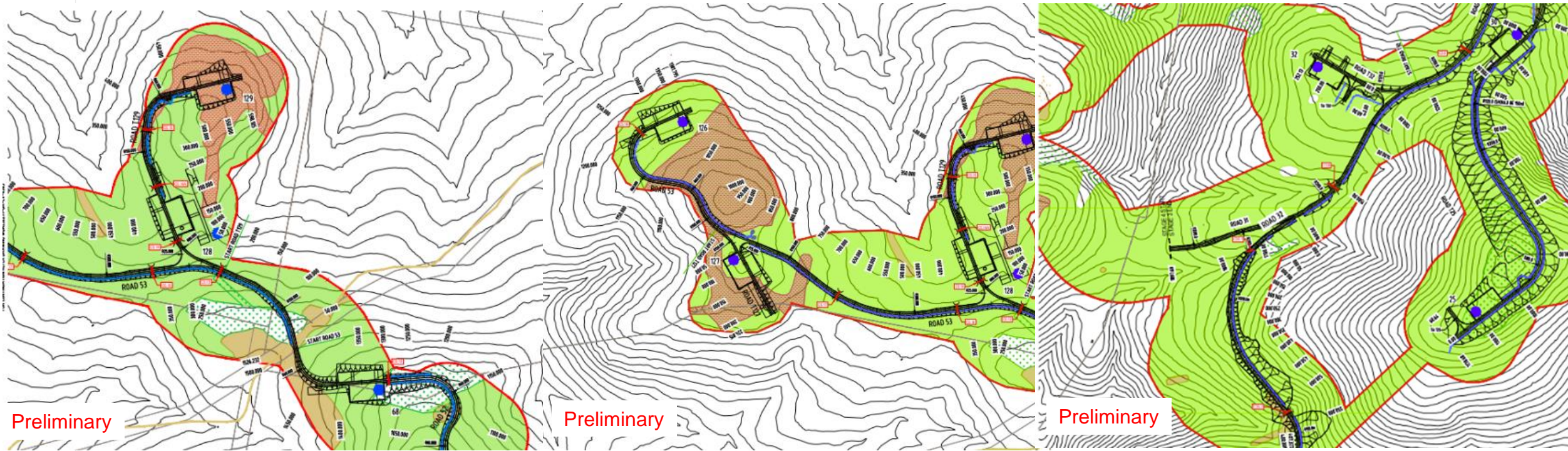
Project is progressing civil design screening of WTG installations

- Purpose is to:
 - Identify any problematic WTG installations now rather than at site
 - Optimise design to minimise ground impact activities
 - Support contractor selection
- Process is to step through complex topography areas:
 - Reduce need for earthworks
 - Reduce road gradients
 - De-risk construction activities



Coppabella Civils Design –1Q24

Preliminary layout route examples to WTG installations



Project Timeline to 3Q24

Key Dates

Q2 2024

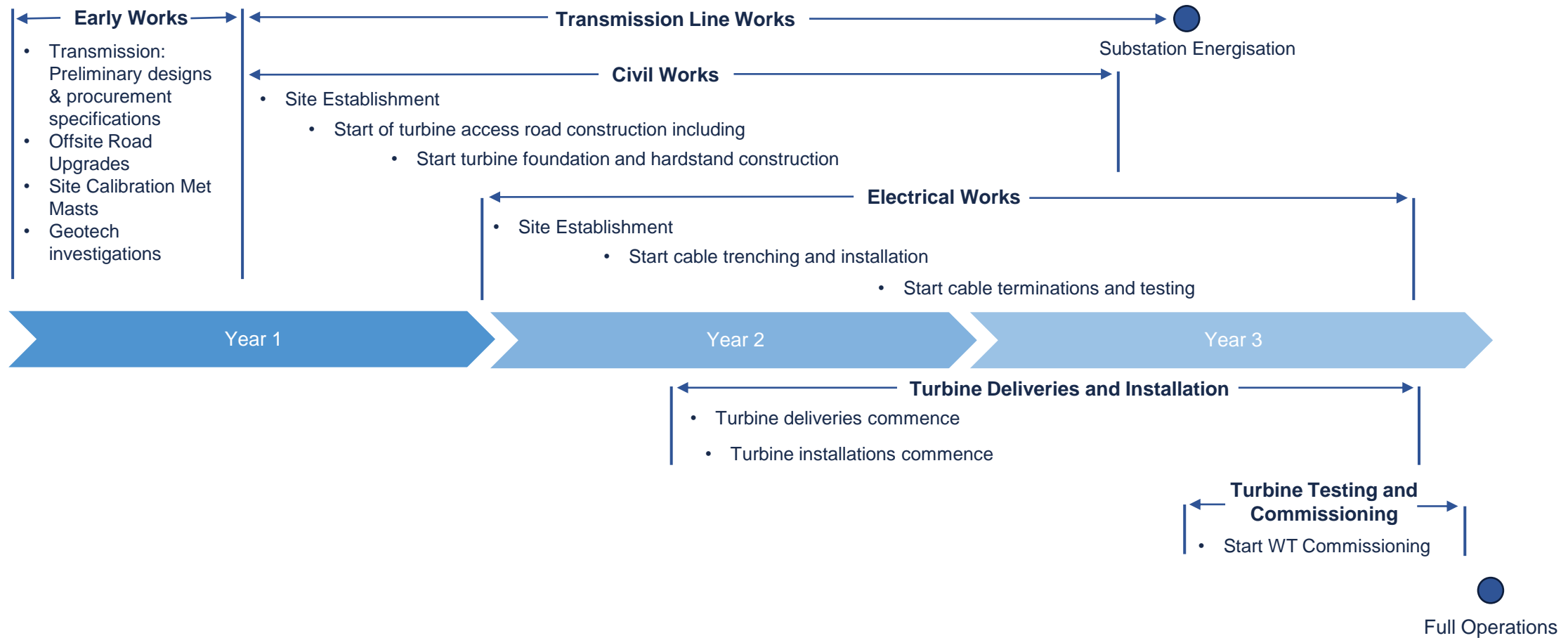
- GW Approvals
- Planning
 - Compliance / plans
- Civils Design (Stage 1)
- BOP re-tenders
- Grid Works 132kV
 - Transgrid – Offer To Connect
- Investment funding

Q3 2024

- Early Works
 - Public Roads Upgrade Works
- Main Notice to Proceed (NTP)
 - Electrical BOP
 - Civils BOP
 - Turbine Supply & Install
 - Transgrid Transmission Line

Project Activities

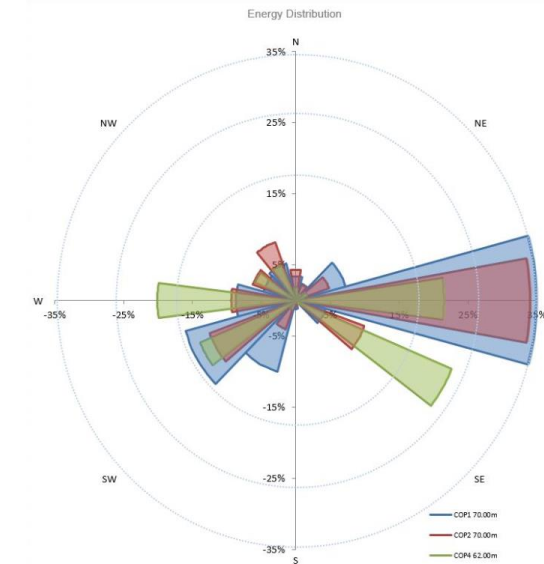
Indicative timeline, may change



Energy Yield & Layout

Energy Assessment - Key Stats

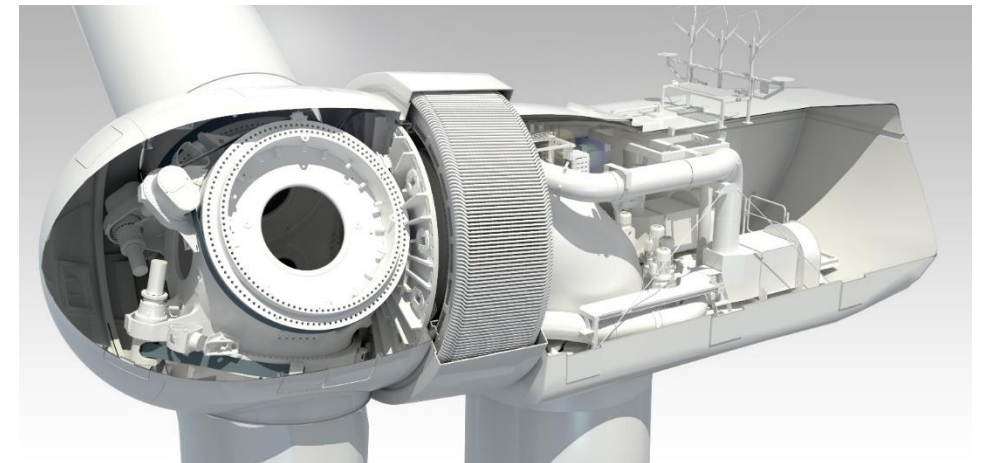
- 7.5m/s (27 km/h):
 - Ave. wind speed at hub height across the site
 - 6.5-8.5m/s across wind turbine locations
 - Strong wind resource for NSW



GW4.2 Wind Turbine

The GW136/4.2MW is being proposed for the site:

- Permanent magnet direct drive design
- No high-speed gearbox
- High efficiency
- IEC Class IIA wind turbine
- 100m hub height, 171m tip height



Planning Update

Ongoing Update and Finalisation of Project Documentation

Biodiversity Offsetting Requirements

- Vegetation remapping completed and agreed (Sch.3, C.19a) with BCD. Currently finalising the biodiversity offset credit requirements.

Variation to Condition of Approvals

- Requirement to update EEC clearing limits to align with the completed vegetation remapping. Submitted December '23 and currently being assessed by DPE & DCCEEW

Biodiversity Management Plan (BMP)

- Updated BMP lodged December 2023

Other Management Plans

- Review previously approved management plans and update (where required)
- Bird Bat Management Plan
- Progressing Offset arrangements

Environment Protection Licence (EPL)

- Application drafted. To be lodged prior to NTP.

Other

- Whitefields Road – has been impact to Whitefields Road plantings in Dec 2023 due to Council road upgrades. Project is assisting DPHI compliance with preparation of an investigative report, future council works and likely update of Whitefields Roadside Vegetation Management and Landscaping Plan. Assessment of additional plantings to be assessed.
- Council sprayed blackberry along Whitefields Rd
- Lodged Water Supply Works approvals for test bores. Production bore timing of use under update.

Construction & Operations phases – managing the asset

Construction & Operations phases – managing the asset

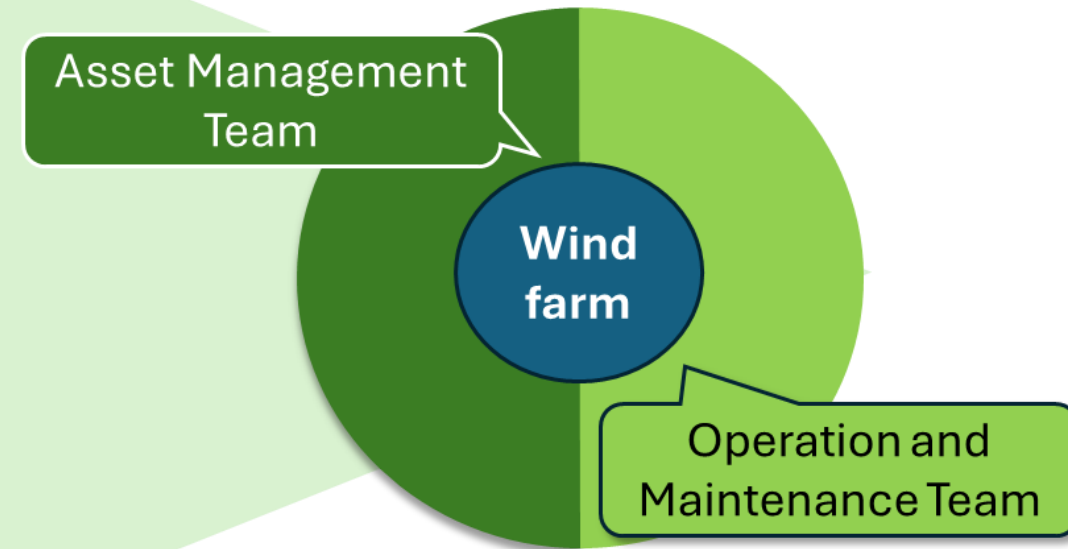
We liaise with the local community

We listen to complaints, manage investigation, mitigation actions and response

We manage the community funds, liaise with local groups and individuals to maximise benefits to the local community

We ensure the plans, endorsed by the government, are implemented

We engage consultants and contractors to implement the plans – prioritise local business as much as we can.



A short vertical line on the left side of the slide.

Q & A

Outstanding Items from CCC #18

Questions Taken on Notice at the previous CCC Meeting:

- ❖ How often will Coppabella be used to take excess power off the grid?

Coppabella Windfarm operates solely as a power generator, producing electricity to contribute to the overall power supply - it is not designed to 'take excess power off the grid'.

The dynamics of power generation involve matching the electricity demand on the grid with the supply generated by various sources, including wind farms like Coppabella. The grid operator manages the balance between supply and demand to ensure a stable and reliable power supply for the community.

- ❖ Will Goldwind still be using a Permanent Magnet Direct Drive Turbines on Coppabella? What is the Cobalt in composition? Where is that cobalt sourced?

The project will use the GW136/4.2MW class IIA turbine with Permanent magnet synchronous generator.

In wind turbine magnetic steel, cobalt is typically present as an alloying element. These magnetic steels are usually used to manufacture permanent magnets, which generate the magnetic field needed, with rotation around the rotor of the wind turbine, to produce electrical energy. The addition of cobalt can enhance the performance of the magnets, increasing their magnetic field strength and stability, making them more suitable for applications such as wind turbines. Additionally, cobalt may also form alloys with other elements to adjust magnetic properties and corrosion resistance, thereby improving the performance and lifespan of the magnetic steel used in wind turbines.

The generator supplier of Goldwind turbine is CRRC <https://www.crrcgc.cc/inaustraliaen>
(the same supplier of Sydney Double-Deck EMU Trains and Melbourne HCMT Metro trains)

Questions Taken on Notice at the previous CCC Meeting:

- ❖ Explain again please how many permanent maintenance staff will Goldwind employ on Coppabella post construction?

We're planning to have around 13 permanent staff dedicated to the operation and maintenance of the wind farm. Depending on the maintenance plan and other needs raised during the operation, we will work with contractors, preferably with local businesses.

- ❖ Does Goldwind have a comment/stance on the recent Reckless Renewables Rally held in Martin Place?

Goldwind does not have a view on the Reckless Renewables Rally, nor on federal or state government policy. The project team is focused on progressing Coppabella Wind Farm towards construction, and ensuring it complies with all planning requirements and meets best practice standards.

- ❖ Does each wind turbine have its own pad mounted transformer, correct? Is there a circuit breaker aligned with each wind turbine?

Each wind turbine has the transformer mounted at the bottom platform at the basement of tower. RMU will be mounted on own pad/slab outside of tower. Yes, a circuit breaker aligned with each turbine.

Questions Taken on Notice at the previous CCC Meeting:

- ❖ In light of the recent thefts from a Coppabella hosts property and earlier severe animal welfare issues associated with the same hosts property will there be mandatory Police checks on all employees working on the Coppabella project? This applies to both construction staff and maintenance staff. If not why not?

The level of screening for each position, including police checks, is assessed based on the position requirements, scope, risk assessment, project requirements and access to sensitive information or critical assets.

From a project perspective, this kind of requirements are coordinated between HR and the Project Manager.

- ❖ What is the weight of Permanent Drive magnets?

PMDD (Permanent Magnet Direct Drive) generator consists of stator, rotor, stator shaft, rotor shaft, and other accessories, the design standard weight of PMDD generator is 96000kg, the rotor consists of rotor support and permanent magnets, the total weight of Permanent drive magnets is 2943kg (includes 1920 units of magnets). The weights of the magnets are not available.

THANKYOU

GOLDWIND AUSTRALIA PTY LTD