

# COPPABELLA WIND FARM

Project Update for CCC Members

11 July 2024

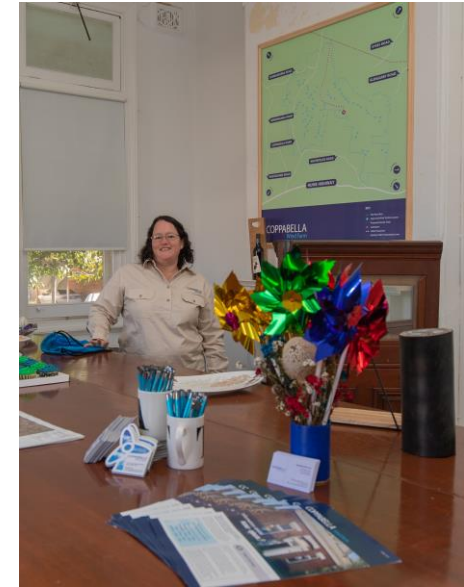


- Community Engagement Update
- Project Update
- Planning Update
- Construction & Operations phases – asset management introduction

# Community Engagement Update

## The Binalong Information Centre is open

- Alison is at Binalong on Mondays 12:30 – 2:30pm and Thursdays 9am – 12noon
- Sponsorship began with the Binalong NSW Swimming Club and Binalong Brahmans
- Paul and Alison have met with some local neighbours to re-establish contact and provide a project update
- Measure have been taken to attempt contact with disconnected lines
- Winter Newsletter is being distributed
- Coppabella Website is continuously updated. Project updates and news available, as we progress towards construction



## As the project gets closer to construction, we will continue to support local communities

- Sponsorship Fund continues to operate.
- Latest partnerships with the Binalong NSW Swimming Club and the Binalong Brahmans.
- Contact Alison or Paul if you have any sponsorships ideas or proposals.



# Long-Term Energy Service Agreement (LTESA)

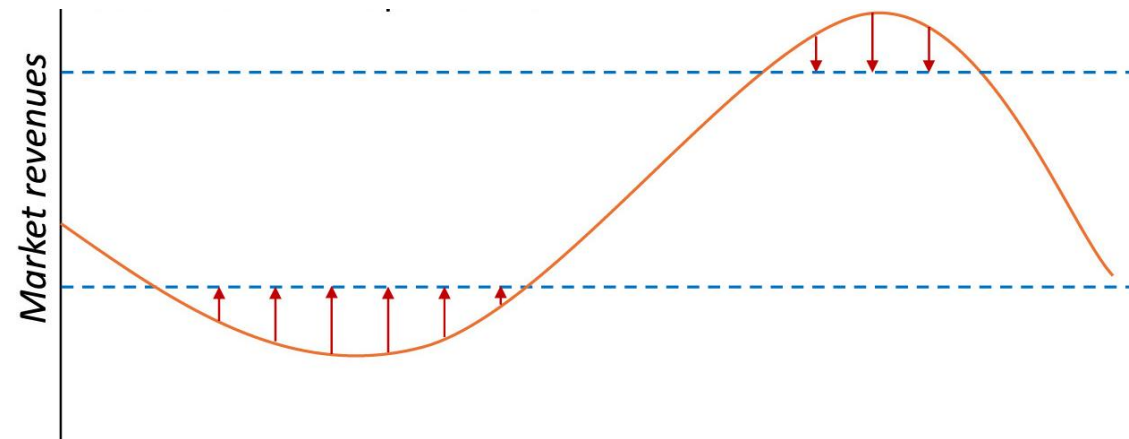
## What is it?

LTESAs will provide generators with the option to sell their electricity at an agreed minimum fixed price to the market.

This provides additional revenue certainty for investment. Scheme is run by the NSW Government.

The LTESA term is for 20 years to ensure community benefits.

Goldwind Australia partner



# Long-Term Energy Service Agreement (LTESA)

## Examples of how the community benefits immediately

Prior to operation \$30-50,000/year for local projects

On operation

Community Enhancement Fund: \$172.5K/year,

Supplementary fund too

LGA / HTC regional investment commitments

Also....

Local supply chain commitments

Local steel products & components

Investment & innovation commitments



Project Contact Points	
General Information hotline (free call where you leave a messages and Alison will get back to you)	1800 884 689
Email	<a href="mailto:info@coppabellawindfarm.com">info@coppabellawindfarm.com</a>
Website	<a href="http://www.coppabellawindfarm.com">www.coppabellawindfarm.com</a>
Paul's direct phone number (Stakeholder Engagement Manager)	0400 004 293
Alison's direct phone number (Local Community Relations Officer)	0401 472 691
Ben's direct phone number (Development Manager)	0400 882 095



# Project Update



# Project Update – key elements

## Progressing internal Goldwind approvals

- Firm Pricing for Construction Contracts / Civils Design
- Funding arrangements

## Finalising Coppabella program

- civil, electrical, grid and turbine program components

## Planning Approvals (State, Federal, Crown):

- Satisfying pre-construction conditions and compliance planning activities
- Environment Protection Licence (for Construction Activities)
- Transgrid Addendum REF 2 for 99M Rebuild (incl. STATCOM) was approved 1 March 2024

## Grid Connection Agreement

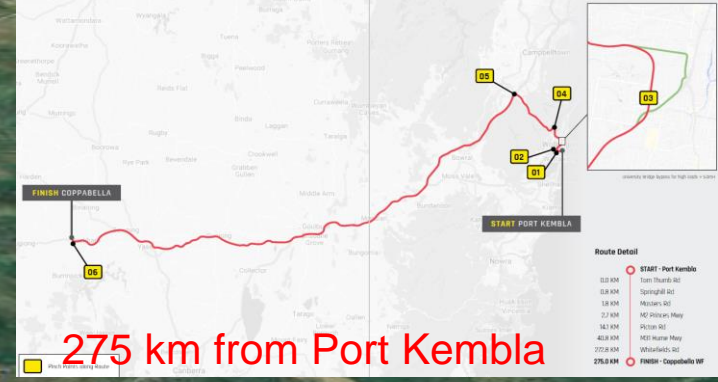
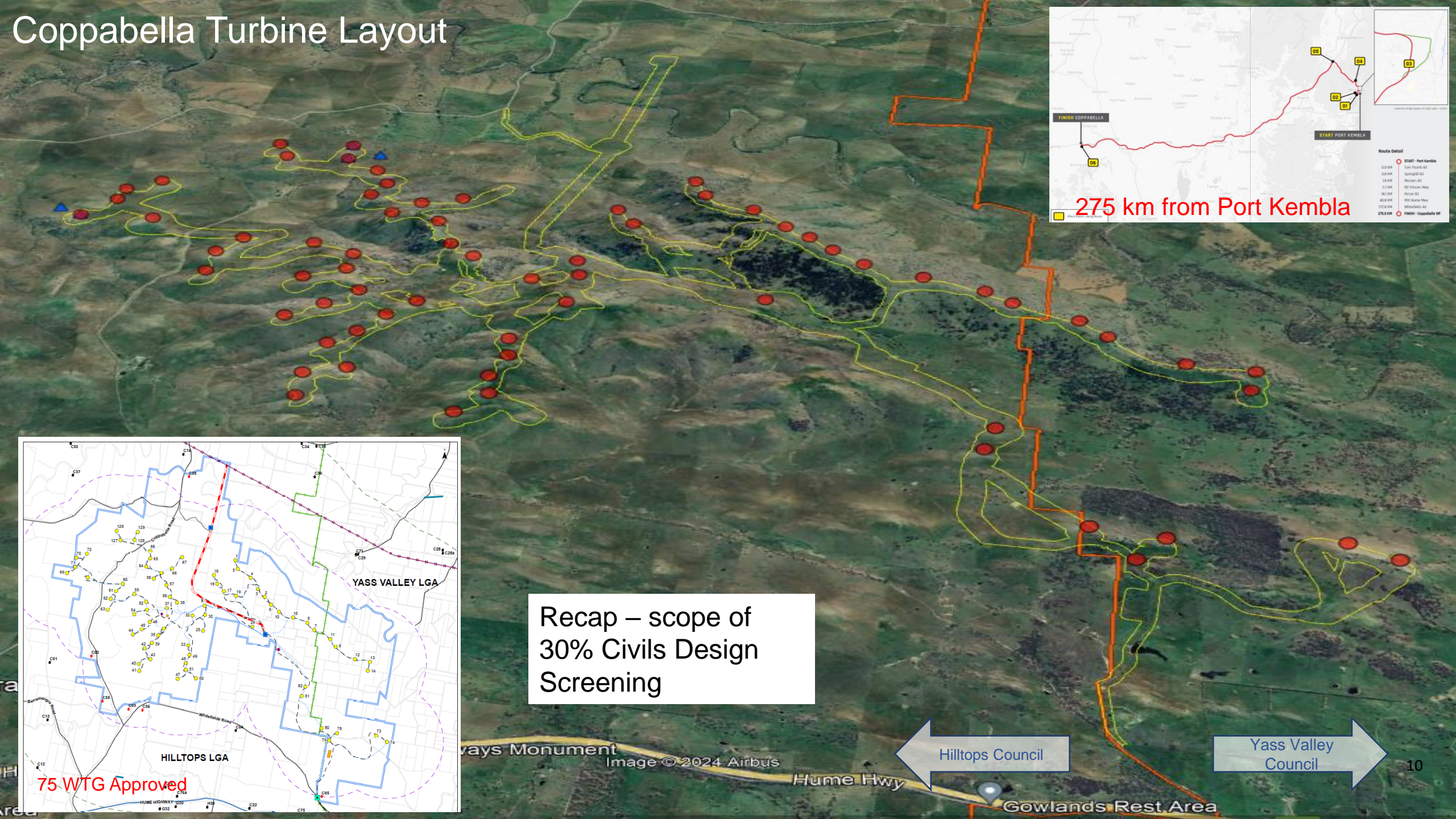
- Connection Application was lodged Feb 2023
- Full Impact Assessment analysis has been successfully completed, report is pending
- Full submission package submitted & reviewed – final AEMO/TG acceptance pending
- Transgrid is progressing re-tender activities on grid works with selected contractors
- Connection schedule & costings to then be assessed
- Offer to Connect (Technical 5.4.3 a & b Letters) anticipated Jul 24, commercial to follow

## Land Agreements

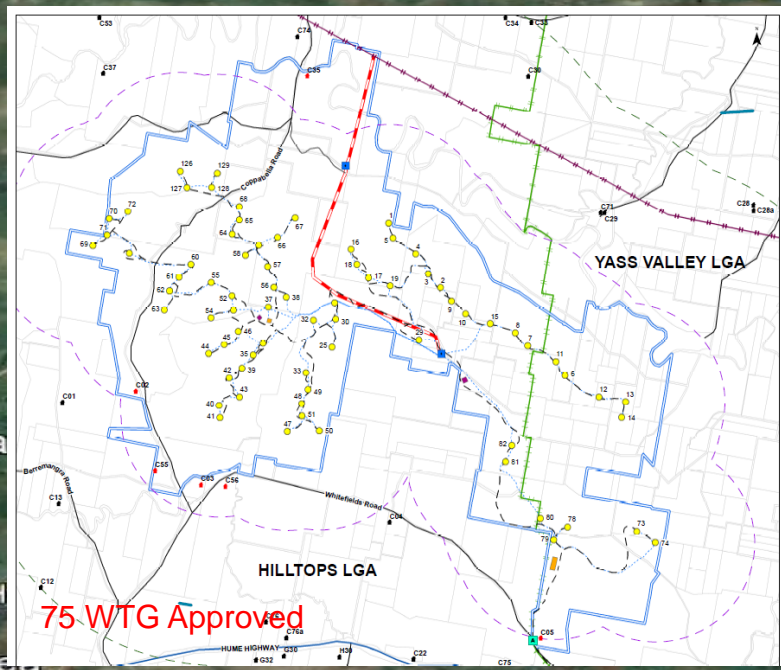
- Transgrid access arrangements – connect to grid (finalising)
- Neighbour Agreements



# Coppabella Turbine Layout



275 km from Port Kembla



Recap – scope of 30% Civils Design Screening

Hilltops Council

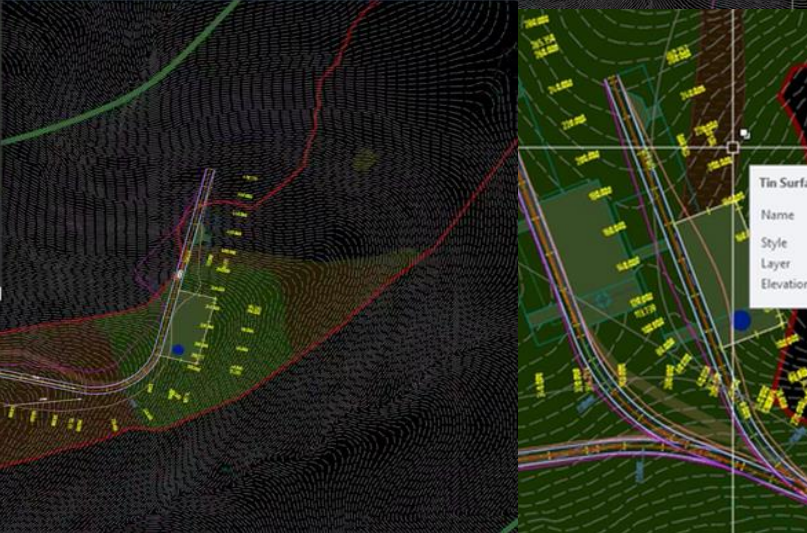
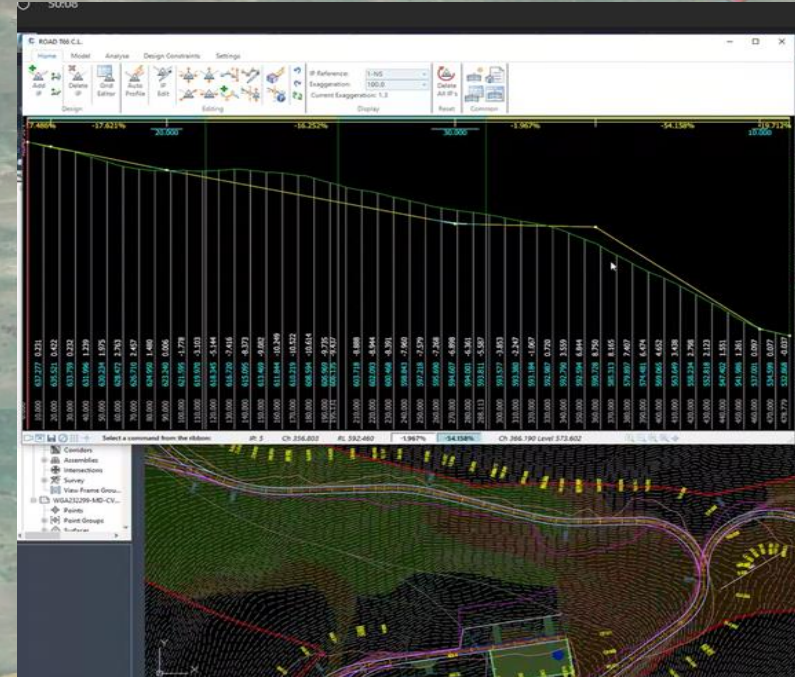
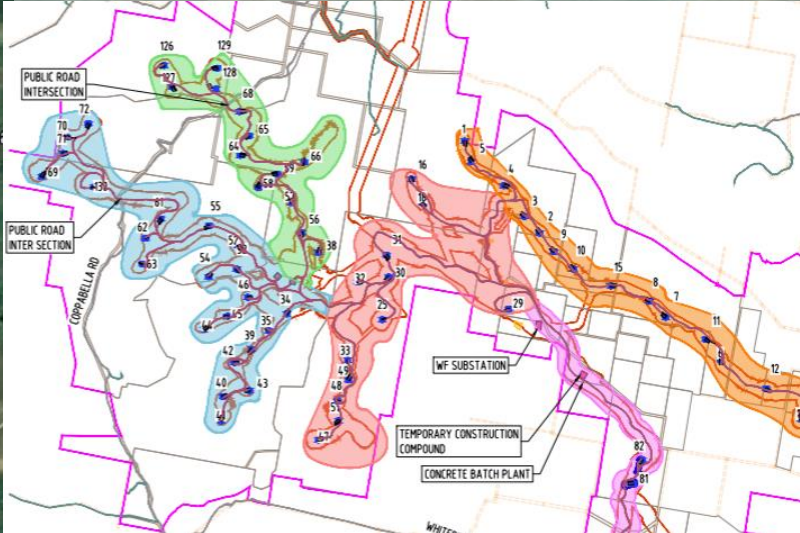
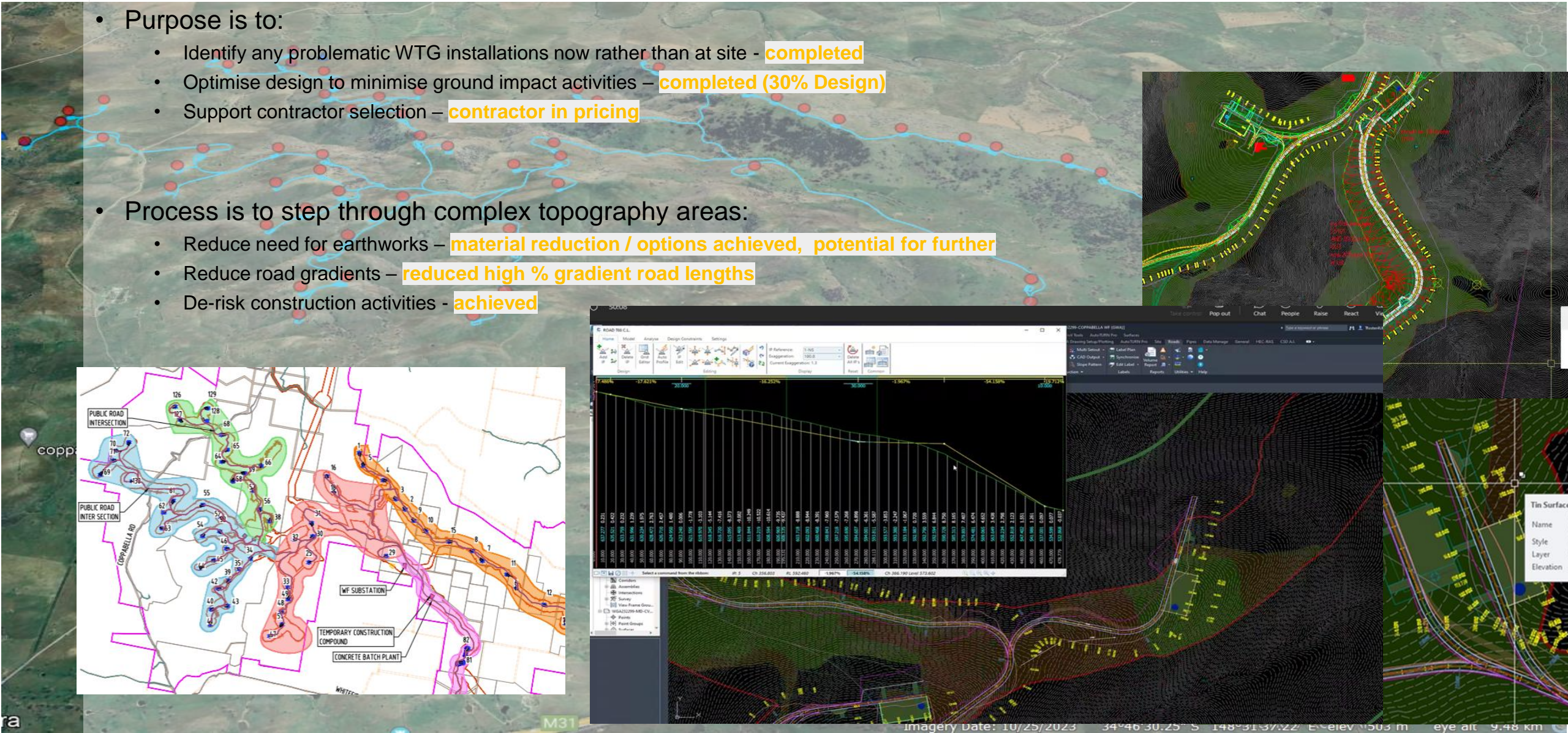
Yass Valley Council



# Coppabella Civils Design –1H24

Project has progressed civil design screening of all WTG installations

- Purpose is to:
  - Identify any problematic WTG installations now rather than at site - **completed**
  - Optimise design to minimise ground impact activities – **completed (30% Design)**
  - Support contractor selection – **contractor in pricing**
- Process is to step through complex topography areas:
  - Reduce need for earthworks – **material reduction / options achieved, potential for further**
  - Reduce road gradients – **reduced high % gradient road lengths**
  - De-risk construction activities - **achieved**





# Project Timeline - 3Q24

## Key Dates

### Q3 2024

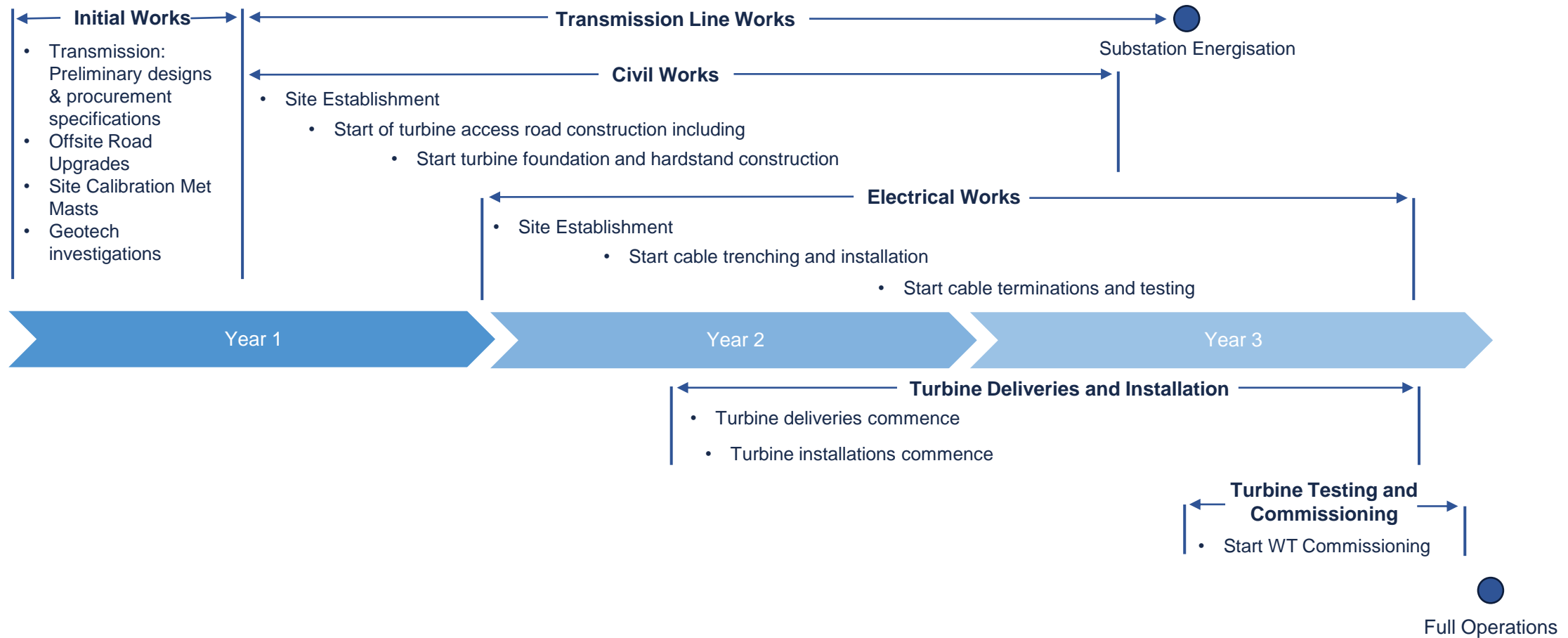
- GW Approvals / Investment funding (active)
- Planning
  - Compliance / plans
- Civils Design (Stage 1) - complete
- BOP re-tenders – (active)
- Grid Works 132kV
  - Transgrid – Offer To Connect

### Q4 2024

- Initial Works
  - Met mast deployment
  - Public Roads Upgrade Works (on NTP)
- Notice to Proceed (NTP)
  - Electrical BOP
  - Civils BOP
  - Turbine Supply & Install
  - Transgrid Grid Transmission works

## Project Activities

Indicative timeline, may change



# Energy Yield & Layout

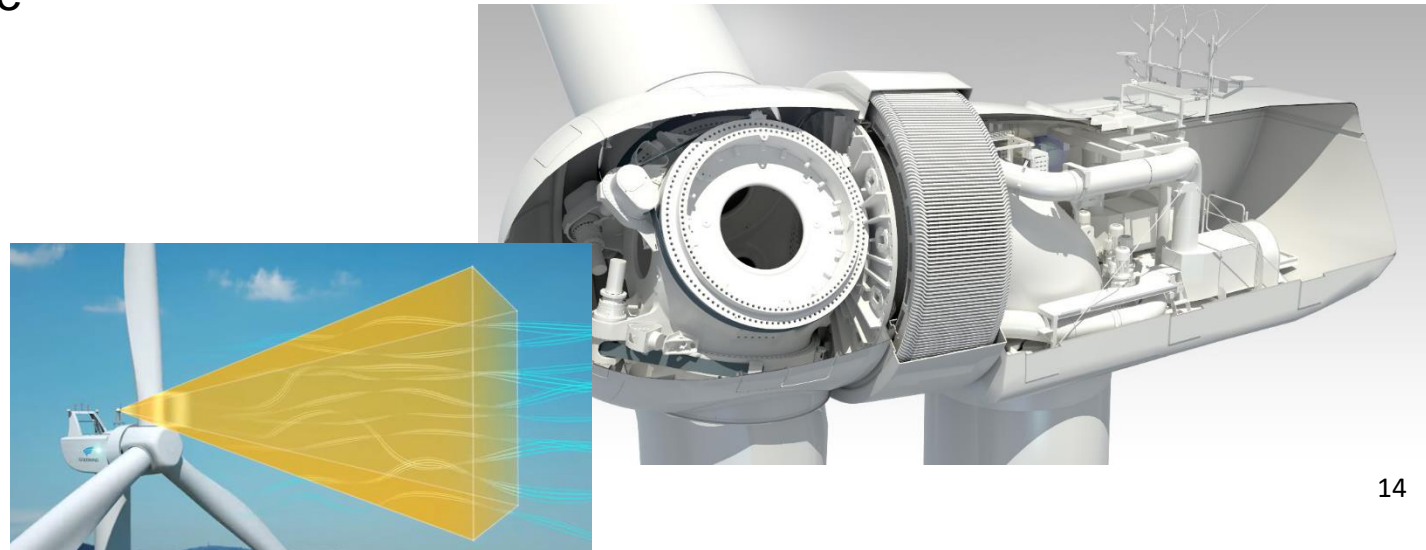
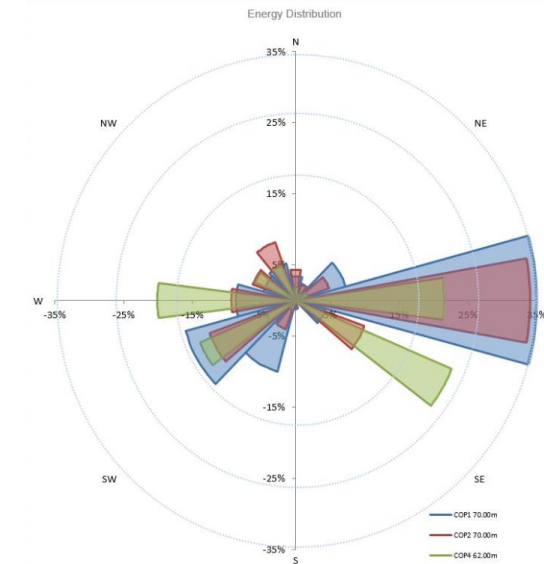
## Energy Assessment - Key Stats

- 7.5m/s (27 km/h):
  - Ave. wind speed at hub height across the site
  - 6.5-8.5m/s across wind turbine locations
  - Strong wind resource for NSW

## GW4.2 Wind Turbine

The GW136/4.2MW is being proposed for the site:

- Permanent magnet direct drive design
- No high-speed gearbox
- High efficiency
- IEC Class IIA wind turbine
- 100m hub height, 171m tip height
- LiDAR Assisted Control (LAC)





# Planning Update

## Ongoing Update and Finalisation of Project Documentation

### Biodiversity Offsetting Requirements

- Vegetation remapping completed and agreed (Sch.3, C.19a) with BCD. Currently finalising the biodiversity offset credit requirements. Awaiting on BCD response to full GW RFI response (finalise Q324).

### Variation to Condition of Approvals

- Requirement to update EEC clearing limits to align with the completed vegetation remapping. Submitted December '23 and currently being assessed by DPE & DCCEEW (finalise Q324 pending resolution above)

### Biodiversity Management Plan (BMP)

- Updated BMP lodged December 2023 (with Regulators – finalise Q324)

### Other Management Plans

- Review previously approved management plans and update (where required)
- Bird Bat Management Plan
- Whitefields Roadside Vegetation Management and Landscaping Plan
- Progressing Offset arrangements

### Environment Protection Licence (EPL)

- Application drafted. To be lodged prior to NTP.

### Other

- Whitefields Road – has been impact to Whitefields Road plantings in Dec 2023 due to Council road upgrades. Project investigative report prepared to document impact for DPHI & future council works.
- Council sprayed blackberry along Whitefields Rd – follow up spraying in Autumn
- Lodged Water Supply Works approvals for test bores. Resubmission for minor amendment.

# Construction & Operations phases – managing the asset



# Construction – managing the asset

Activities during construction phase

- Compliance
- Liaison with councils and community





A short, dark vertical line on the left side of the slide.

# Q & A

# Outstanding Items from CCC #19



None



# Glossary

## AEMO

Australian Energy Market Operator

## BCD

Biodiversity Conservation Department

## BOP

Balance of Plant

## COD

Commercial Operation Date

## DCCEEW

(Federal) Department of Climate Change, Energy, the Environment and Water

## DPE / DPHI

The changing name of the NSW Department of Planning

(DPE – Department of Planning and Environment,

DPHI – Department of Planning, Housing and Infrastructure)

## GW (A)

Goldwind (Australia)

## IIA

Wind Class/Turbulence classification per IEC 61400

## IEC

International Electrotechnical Commission

## kV

kiloVolt – a thousand volts, a volt is a measure of electromotive force for power circuits

## Lac

LiDAR assisted control

## LiDAR

Light detection and ranging

## LTESA

Long-Term Energy Service Agreement

## NTP

Notice to Proceed

## REF

Review of Environmental Factors

## RFI

Request for Information – a document that details information, guidance and clarification needs required for specific aspects of a project.

## STATCOM

Static Synchronous Compensator – a reactive power regulating device based on the voltage sourced converter (VSC) used to maintain AC system voltages and to enhance the stability of the AC system

## TG

Transgrid

## WT/WTG

Wind Turbine Generator

# THANKYOU

GOLDWIND AUSTRALIA PTY LTD